

Project Fact Sheet

Emergency Response Window

Strengthening Resilience, Response and Recovery Capacity– a community led initiative of Climate Migrants and Covid 19 Affected Slum Dwellers in Khulna city

Project reference no: CBF/ERW/NGO/2021/004



Implementing Partner/s:

Habitat for Humanity International - Bangladesh (in partnership with Jagrata Juba Shangha)



Project Location:

Eight slums in Khulna City Corporation



Beneficiary profile:

Target participants: Climate migrants and other slum communities including women, person with disability and extreme poor

Direct participants with single counting¹: **9,054**

Direct participants with double counting²: **12,933**

Proposed climate-induced migrants: **100%**

Share of women: **80%**

1. Single count includes participants who receive only one type of support/ service from the project.

2. Double count includes participants who receive support/ services multiple times from different measures within the same project.



Project Duration: 16 August 2022 – 15 August 2024



Total Budget:
BDT 40,601,217

CBF Contribution:
BDT 38,583,473

Implementing Partner's Contribution (own and other sources)
BDT 2,017,744

Supported by



implemented by
KFW



হ্যাঁটিয়াট ফর হিউম্যানিটি
Habitat for Humanity®
Bangladesh

Implemented by



Outcome/ Objective

Increased resilience of livelihood and WASH facilities of slum dwellers in Khulna city who migrated due to the impacts of climate change and are severely affected by COVID-19



Key problems identified by the project

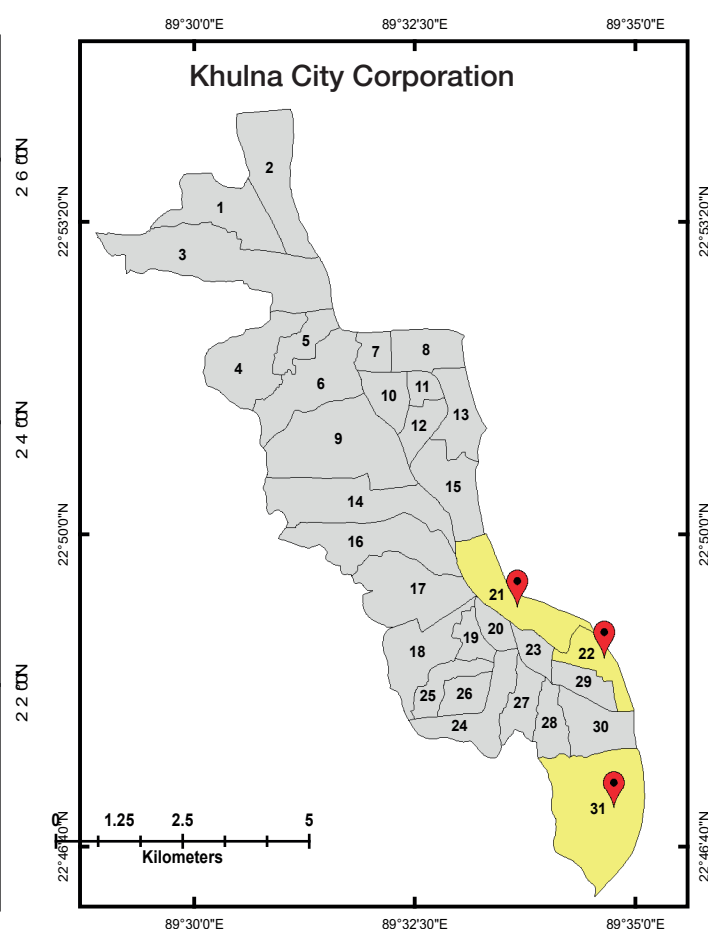
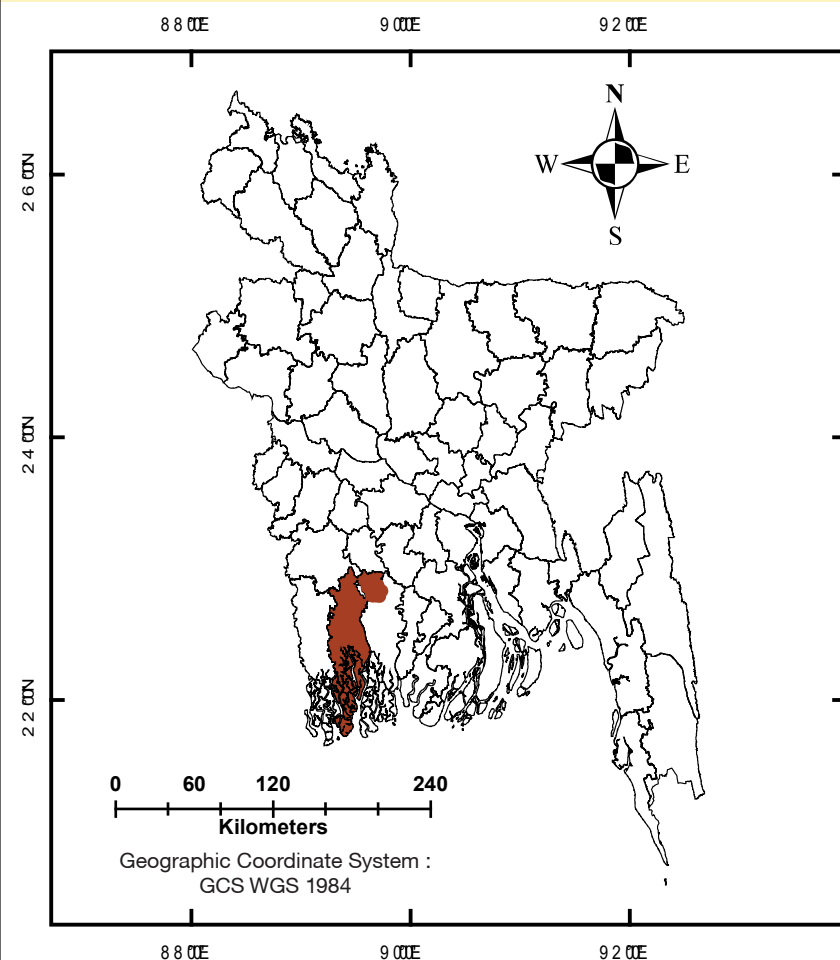
- ▶ Lack of access to sustainable income opportunities and economic resilience
- ▶ High level of risk of COVID-19 infection
- ▶ Inadequate social protection and high poverty rate
- ▶ Inadequate WASH facilities and lack of knowledge on health and hygiene practices leading to high mortality and morbidity rate
- ▶ Lack of awareness on GoB and WHO health directives and advisories as well as COVID 19
- ▶ Lack of awareness regarding Government Social Safety Net Programs (SSNP) and procedures to access it
- ▶ Lack of skill development and entrepreneurship support during Covid-19
- ▶ Women are running their small business with inadequate capital, lack of entrepreneurial knowledge and skills



Highlights on proposed adaptation/ mitigation solutions

- ▶ Organizing awareness campaign on Government and WHO advisories related to COVID-19
- ▶ Providing COVID-19 hygiene kits and vaccination registration support to 5,900 and 1,000 people, respectively
- ▶ Renovation of 5 community toilets, installation of 3 deep tube wells/ submersible pumps, 5 shallow tube wells/ submersible pumps, 1 community bathing facility for women and adolescent girls (1,862 people)
- ▶ Ensuring 800 eligible slum dwellers' access to the government's social safety net programs through orientation and advocacy
- ▶ Arranging entrepreneurship training for 200 young women, person with disabilities, widow, divorced women and facilitating market linkage to expand female-led business/IGA
- ▶ Provide seed funding/tools & equipment, to start/expand women led business/IGA

Project Locations and Key Interventions



Project Locations

Total covered slums- 14

Ward - 21 : 3 slums

Ward - 22 : 3 slums

Ward - 31 : 8 slums

Project Key Interventions

- | | |
|--------------------|----------------------------------|
| Awareness Building | IGA Training |
| Advocacy | Vaccination Registration Support |
| Economic Support | WASH |
| Health & Hygiene | |

Legend

- Project Location
- Khulna District
- District Boundaries of Bangladesh
- Ward Covered
- Ward Boundary

Map has been prepared by
Adiba Ahamed,
CBF Secretariat