

Project Fact Sheet

Emergency Response Window

Responding to Climate Change and COVID-19 crisis in Bangabandhu Colony, a vulnerable urban slum of Barisal District, Bangladesh

Project reference no: CBF/ERW/NGO/2021/007



Implementing Partner/s:

Christian Aid (in partnership with AVAS)



Project Location:

Barisal City Corporation



Beneficiary profile:

Target participants: Climate-induced migrants and residents of slums living in vulnerable conditions

Direct participants with single counting¹: **15,000**

Direct participants with double counting²: **53,970**

Proposed climate-induced migrants: **75%**

Share of women: **60%**

1. Single count includes participants who receive only one type of support/service from the project.
2. Double count includes participants who receive support/ services multiple times from different measures within the same project.



Project Duration: 16 August 2022 – 15 August 2024



Total Budget:
BDT 33,962,667

CBF Contribution:
BDT 31,031,232

Implementing Partner's Contribution (own and other sources)
BDT 13,398,788

Supported by

Implemented by



Outcome/ Objective

Targeted urban slum population has improved health and hygiene practices, with improved capacities to cope with COVID-19 pandemic and climate change impact through awareness and resilience actions



Key problems identified by the project

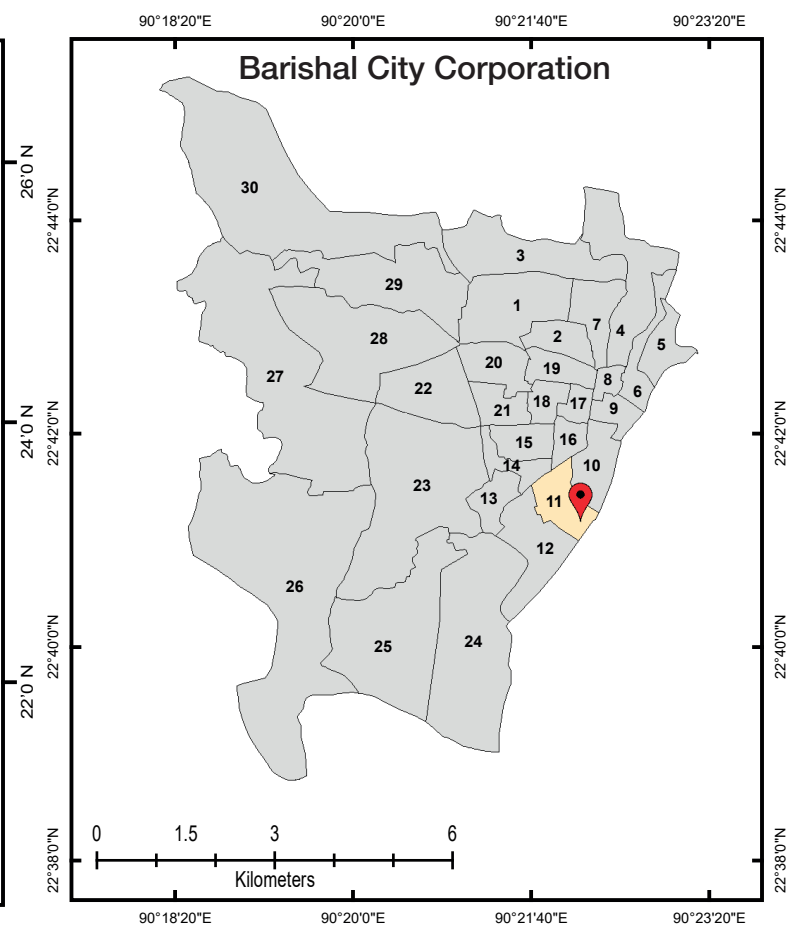
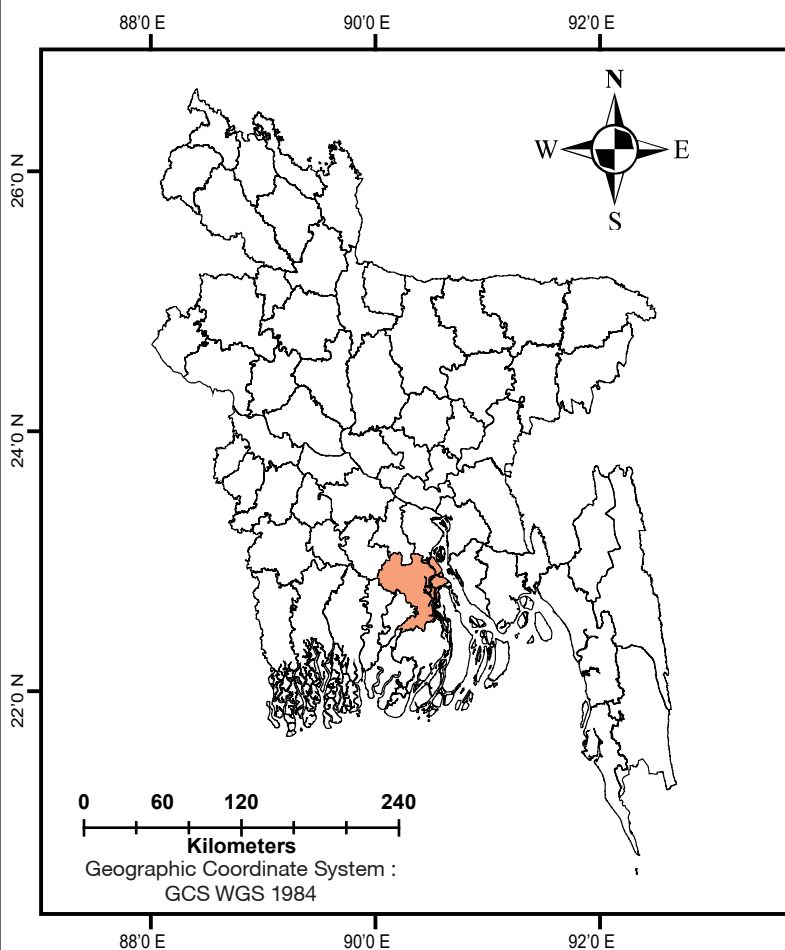
- ▶ Absence of adequate essential services and limited access to basic essential services
- ▶ Lack of WASH facilities that adequately respond to environmental protection and COVID-19
- ▶ Lack of knowledge and capacity on disaster risk reduction, climate resilience, and pandemic safety measures (i.e., COVID-19)
- ▶ Lack of livelihood options that can withstand climate change effects
- ▶ Flooding/waterlogging during any high tide, water surge, flood and monsoon rain
- ▶ Frequent fire incident in slums of Barisal City Corporation



Highlights on proposed adaptation/ mitigation solutions

- ▶ Multi-purpose community support and information service centre (MPCC) for climate migrants will be established
- ▶ Installation of 3 water points through deep boring and 5 latrine blocks at the community
- ▶ Installation of 20 hands-free hand washing stations in the community
- ▶ Construction of 1,500 ft drains to reduce clogging and blockage
- ▶ 100 youth (male and female) will receive formal training and cash support to implement the business plan
- ▶ Behavioural change communication material will be introduced to increase the base knowledge on COVID-19 and climatic hazards
- ▶ Climate smart agriculture for 225 slum dwellers

Project Locations and Key Interventions



Project Locations

Total covered slum - 1
Ward - 11 : Bangabandhu Colony

Project Key Interventions

- | | |
|---|---|
| Access to Service - Market | IGA Training |
| Awareness Building | Multipurpose Community Support & Information Centre |
| Capacity Development - Training / Session | WASH |
| Economic Support | |

Legend

- Ward Boundary
- Barishal District
- District Boundaries of Bangladesh
- Ward Covered
- Project Location

Map has been prepared by
Adiba Ahamed,
CBF Secretariat