

Project Fact Sheet

Emergency Response Window

Enhancing economic recovery capacity of COVID-19 affected climate vulnerable farmers engaging in dairy, crop, and vegetable farming

Project reference no: CBF/ERW/BRAC/2021/006



Implementing Partner/s:

BRAC Climate Change Programme (in collaboration with BRAC Enterprises)



Project Location:

8 upazilas in Khulna, 7 upazilas in Satkhira and 8 upazilas in Sirajganj district



Participant profile:

Target participants: COVID-19 affected climate vulnerable households in rural

Direct participants with single counting: **6,000**
 Direct participants with double counting: **24,000**
 Proposed climate-induced migrants: **52%**
 Share of women: **50%**

Single count includes participants who receive a support/ service from measure at least one time. Double count includes participants who receive support/ services multiple times from different measures within the same project.



Project Duration: 1 August 2022 – 31 July 2024



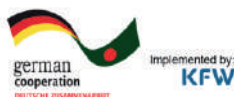
Total Budget:
BDT 102,500,000

CBF Contribution:
BDT 102,500,000

Implementing Partner's Contribution (own and other sources)

N/A

Supported by



Implemented by

Climate Change Programme, BRAC



Outcome/ Objective

The objective is to increase the economic recovery capacity of climate vulnerable farmers affected by COVID-19 through need-based inputs support and capacity building on marketing and adaptive farming techniques



Key problems identified by the project

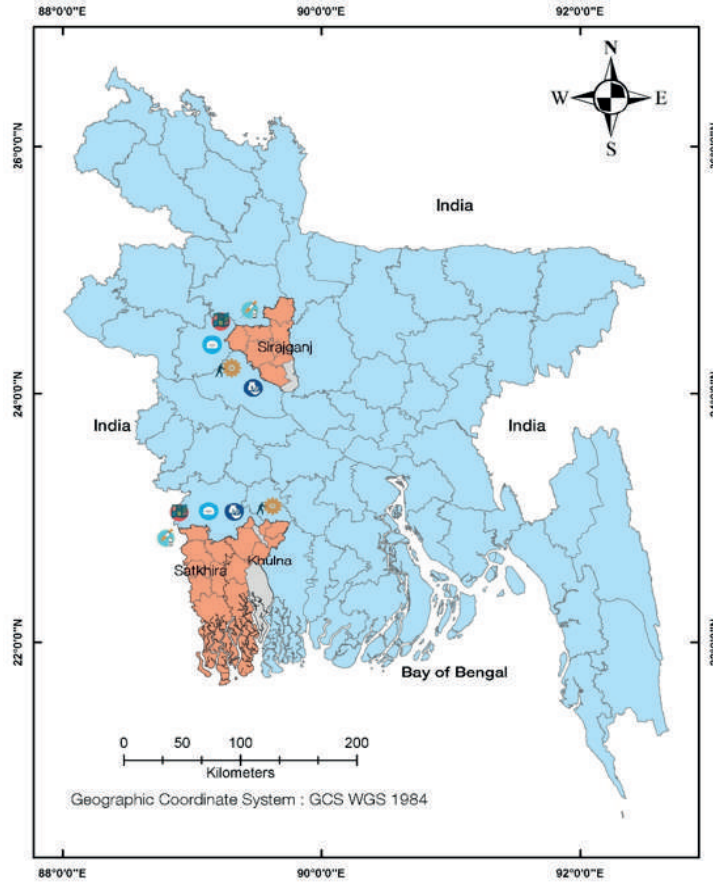
- ▶ Poor, small and marginal dairy, crop and vegetable farmers faced restrictions during the pandemic in accessing the market (e.g., about 50% milk remained unsold or sold at reduced prices)
- ▶ Lockdown/restrictions/measures during Covid-19 has affected their livelihood and pushed them below the poverty line, leading to unprecedented displacement/reverse migration and social crisis
- ▶ COVID-19 has caused substantial disruption in the overall value chain of agricultural products
- ▶ Lack of employment opportunities and loss of income
- ▶ The farmers living in vulnerable settings are more exposed to climate change impacts like salinity intrusion and so on



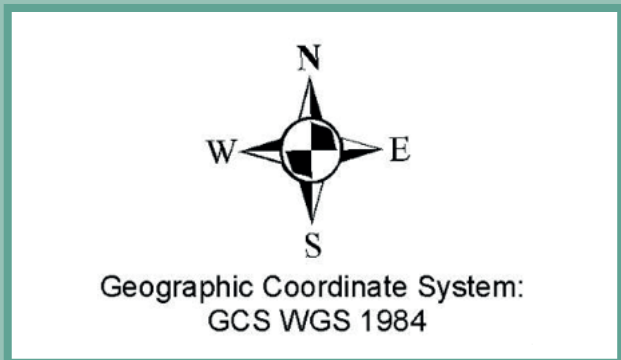
Highlights on proposed adaptation/ mitigation solutions

- ▶ 6,000 Covid-19 affected climate vulnerable farmers will receive need-based input support such as seed, fertilizer, fencing, feed, medicine, vaccine and cash transfer
- ▶ Farmers to receive community level training and orientation
- ▶ Training/refreshers events will be organized for targeted farmers i.e., 6,000 for enhancing their capacity to adopt climate adaptive farming techniques
- ▶ 200 day-long training sessions will be organised for targeted farmers for improving their product marketing capacity
- ▶ 200 day-long networking sessions will be organised with market drivers at the local level for creating and strengthening access to a local market for targeted farmers
- ▶ Communications materials will be developed, printed (6,000 copies) and distributed to prevent Covid-19 transmission

Project Locations and Key Interventions



Legend		
	Project Locations	
	Covered Districts	
	Districts of Bangladesh	
Project Key Interventions-		
	Capacity Development - Training	
	Grant Support	
	Knowledge Product	
	Vaccination Support	
Locations under BRAC Dairy and Food Enterprise		
Khulna District Total Covered Areas- 2 Upazilas & 11 Unions	Satkhira District Total Covered Areas- 6 Upazilas & 47 Unions	Sirajganj District Total Covered Areas- 3 Upazilas & 17 Unions
Dumuria - 6 Unions Paikgachha - 2 Unions	Assasuni - 3 Unions Debhata - 3 Unions Kalaraa - 14 Unions Kaliganj - 7 Unions Satkhira Sadar - 11 Unions Tala - 9 Unions	Shahjadpur - 8 Unions Tarash - 3 Unions Ullahpara - 6 Unions
Locations under BRAC Artificial Insemination Enterprise		
Khulna District Total Covered Areas- 8 Upazilas & 30 Unions	Satkhira District Total Covered Areas- 7 Upazilas & 16 Unions	Sirajganj District Total Covered Areas- 8 Upazilas & 54 Unions
Batiaghata - 4 Unions Dighalia - 4 Unions Dumuria - 6 Unions Koyra - 2 Unions Paikgacha - 3 Unions Phultala - 4 Unions Rupse - 4 Unions Terokhada - 4 Unions	Assasuni - 3 Unions Debhata - 1 Unions Kalaraa - 2 Unions Kaliganj - 4 Unions Satkhira Sadar - 1 Unions Sryamnagar - 3 Unions Tala - 2 Unions	Belkuchi - 6 Unions Kamerkhanda - 4 Unions Kazipur - 9 Unions Raiganj - 8 Unions Shahjadpur - 8 Unions Sirajganj Sadar - 8 Unions Tarash - 5 Unions Ullahpara - 6 Unions
Locations under BRAC Seed and Agro Enterprise		
Khulna District Total Covered Areas- 1 Upazila & 9 Unions	Satkhira District Total Covered Areas- 3 Upazilas & 22 Unions	Sirajganj District Total Covered Areas- 3 Upazilas & 22 Unions
Dumuria - 9 Unions	Assasuni - 3 Unions Satkhira Sadar - 11 Unions Tala - 8 Unions	Shahjadpur - 8 Unions Sirajganj Sadar - 8 Unions Ullahpara - 6 Unions



Map is prepared by:
Md. Rezaul Karim,
Climate Bridge Fund Secretariat