

# Project Fact Sheet

## Emergency Response Window

### Strengthening Economic Recovery Capacity of Climate -Vulnerable New-Poor, especially Returnee Migrants Impacted by COVID-19

Project reference no: CBF/ERW/BRAC/2021/005



#### Implementing Partner/s:

BRAC Migration Programme



#### Project Location:

Urban and rural areas of Khulna, Satkhira, Barisal, Sirajganj, Jamalpur district and Dhaka North City Corporation



#### Participant profile:

**Target participants: Covid-19 induced climate-vulnerable new poor, especially returnee migrants**

Direct participants with single counting: **2,500**

Direct participants with double counting: **4,250**

Proposed climate-induced migrants: **52%**

Share of women: **40%**

Single count includes participants who receive a support/ service from measure at least one time. Double count includes participants who receive support/ services multiple times from different measures within the same project.



**Project Duration: 1 August 2022 – 31 July 2024**



**Total Budget:**  
**BDT 87,500,000**

**CBF Contribution:**  
**BDT 87,500,000**

**Implementing Partner's Contribution (own and other sources)**

**N/A**

Supported by



implemented by  
**KFW**

Implemented by

**Migration Programme  
BRAC**



## Outcome/ Objective

**Outcome 1:** New poor, focusing on returnee migrants, who are exposed to climate change impacts, at risk of displacement and affected by COVID-19, are economically reintegrated to acquire sustainable livelihoods

**Outcome 2:** Government and private service providers are responsive towards new poor, focusing on returnee migrants, who are exposed to climate change impacts, at risk of displacement, and affected by COVID-19 that ensure their social security and financial inclusion



### Key problems identified by the project

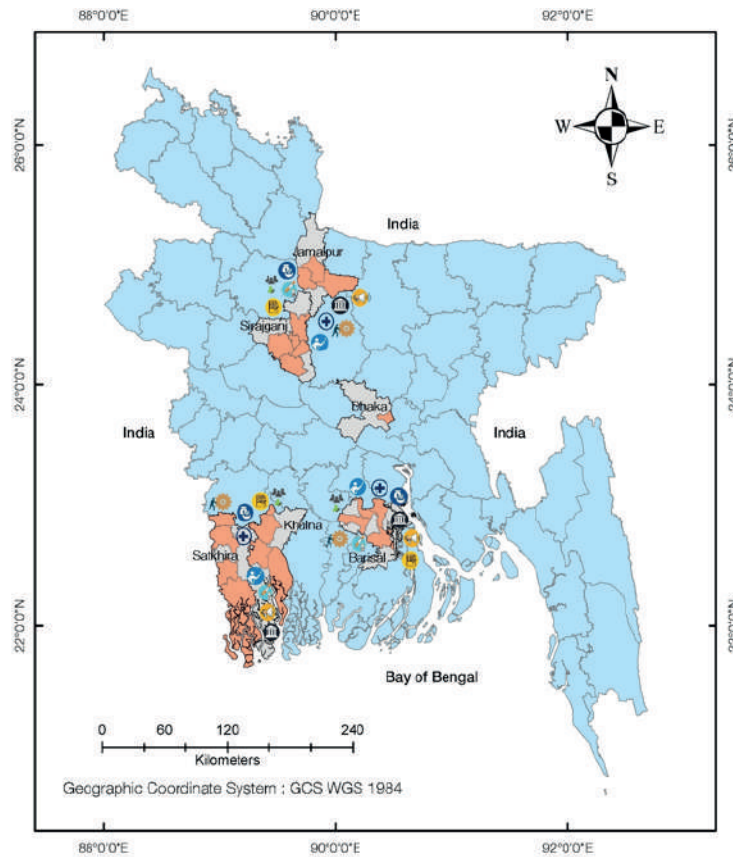
- ▶ High influx of returnee migrants due to the COVID-19 pandemic
- ▶ Returnees lack income sources due to loss of jobs
- ▶ Women returnee migrants being disowned by their family members after facing torture and sexual abuse abroad
- ▶ Nationwide lockdown further isolated the returnee migrant workers with no scope of work and limiting their mobility
- ▶ Exposure to problems such as risk of displacement, social stigma, mental shock, and debt cycle
- ▶ Lack of community support in reintegrating returnee migrants into the society
- ▶ Lack of available and migrant friendly re-integration related services by the government and private sectors



### Highlights on proposed adaptation/ mitigation solutions

- ▶ Identified 2,500 migrants, will have access to tailor-made socio-economic re-integration and economic recovery plans
- ▶ Developing business plans for 2,500 returnee migrants, and entrepreneurship development training for 400 (women-50, men-350) returnee migrants and their families
- ▶ Providing financial literacy training to 850 (women-200, men-650) returnee migrants and their families along
- ▶ 1,250 returnee migrants (250 women and 1,000 men) will receive a one-time financial grant.
- ▶ Providing Psychosocial Support Service (PSS) to women and men returnee migrants
- ▶ Arranging awareness-raising activities on COVID-19 prevention and protection, and climate change resilience measures at community level for 36,800 people

# Project Locations and Key Interventions



## Legend

- Project Locations
- Districts of Bangladesh
- Covered Districts

**Barisal District**  
Total covered areas-  
4 Upazilas & 24 unions  
Gaumadi – 6 unions  
Wazirpur – 6 unions  
Muladi – 6 unions  
Barisal Sadar – 6 unions

**Jamalpur District**  
Total covered areas-  
3 Upazilas & 18 unions  
Madarganj – 6 unions  
Melandah – 6 unions  
Jamalpur Sadar – 6 unions

**Satkhira District**  
Total covered areas-  
4 Upazilas & 24 unions  
Kalliganj – 6 unions  
Satkhira – 6 unions  
Shyamnagar – 6 unions  
Kolaroa – 6 unions

**Sirajganj District**  
Total covered areas-  
5 Upazilas & 30 unions  
Belkuchi – 6 unions  
Kamarkhanda – 6 unions  
Sirajganj Sadar – 6 unions  
Ullah Para – 6 unions  
Shahjadpur – 6 unions

**Dhaka District**  
Dhaka North City Corporation  
Total covered ward- 1  
Ward – 49 : Dakkhinkhan

**Khulna District**  
Total covered areas-  
4 Upazilas & 24 unions  
Dacope – 6 unions  
Dumuria – 6 unions  
Fultola – 6 unions  
Paikgachha – 6 unions

### Project Key Interventions-

- Access to Services (MFIs)
- Advocacy
- Awareness Development
- Livelihood / Economic Support
- Capacity Development - Training
- Economic Reintegration Plan
- Health Support
- Skill / IGA Training
- Vaccination Support



Geographic Coordinate System:  
GCS WGS 1984

Map is prepared by:  
Md. Rezaul Karim,  
Climate Bridge Fund Secretariat