

Towards Building Resilience: M&E Facts and Figures

For Climate Change Window(CCW)

Fact Sheet # 2 | April,2023



CBF Funded Projects in Implementation

7



Implementing Partners

5



Locations

Districts

4

Urban locations

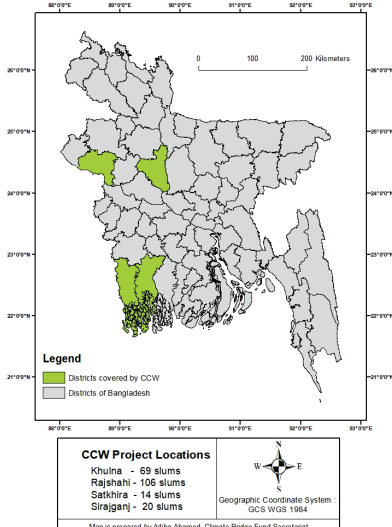
4



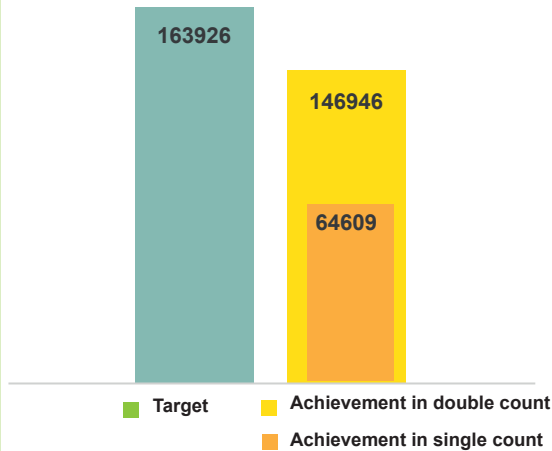
Allocated fund (BDT)

15.9 Cr

Project Locations Covered by Climate Change Window, CBF

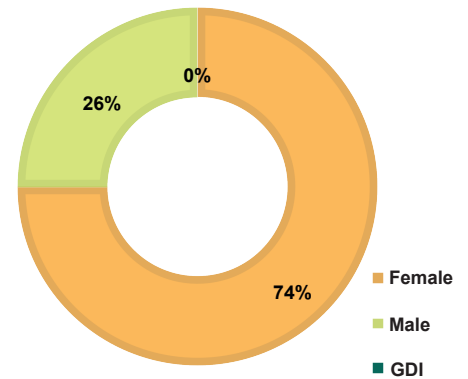


Beneficiaries: target & achievement of CBF(CCW)



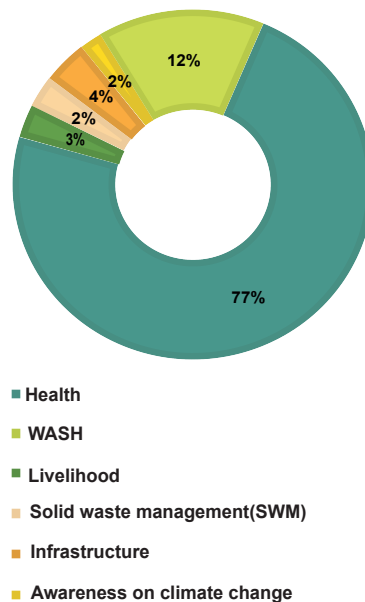
CCW projects has primarily targeted to reach 163926 people by the end of 2024, & till April 2023, 146946 (double count) people (which is 89.64 % of total target) were reached by 4 projects. These projects concerned adaptation intervention in order to combat climate change impact.

Gender disaggregation of beneficiaries with double count (CCW)



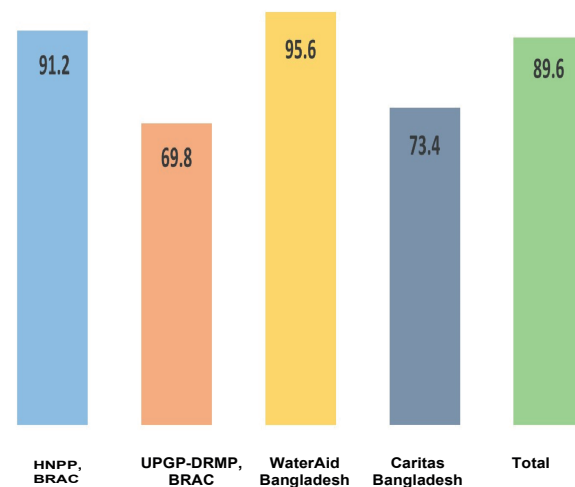
Under the CCW projects the number of beneficiaries consisted of 74% femlae (108,528), 26% male (38,414) and 4 gender diverse individuals (GDI)

Beneficiary reached by sectoral services with double count(CCW)



Out of the six service sectors, prevention & protection of climate sensitive health related disease services reached the highest number of people (77%), followed by climate resilient WASH services (12%), SWM (2%), infrastructure (drainage, walkways, housing and shelter) (4%), awareness programs (2%), & livelihood options for economic resilience (3%).

The progression of beneficiary reached by partners with double count (CCW)



CCW projects reached 89.64% of the targeted beneficiaries from 2020 till April 2023 (double count) through the 4 funded projects. As the above figure illustrates HNPP,BRAC reached 91.2% of the total beneficiary reached via their project, while WAB-VERC reached 69.8%, UPGP-DRMP BRAC reached 95.6%, & Caritas Bangladesh recached 73.4% of the their target.

Adaptation/ Resilience Measures

Infrastructural Adaptation Measures

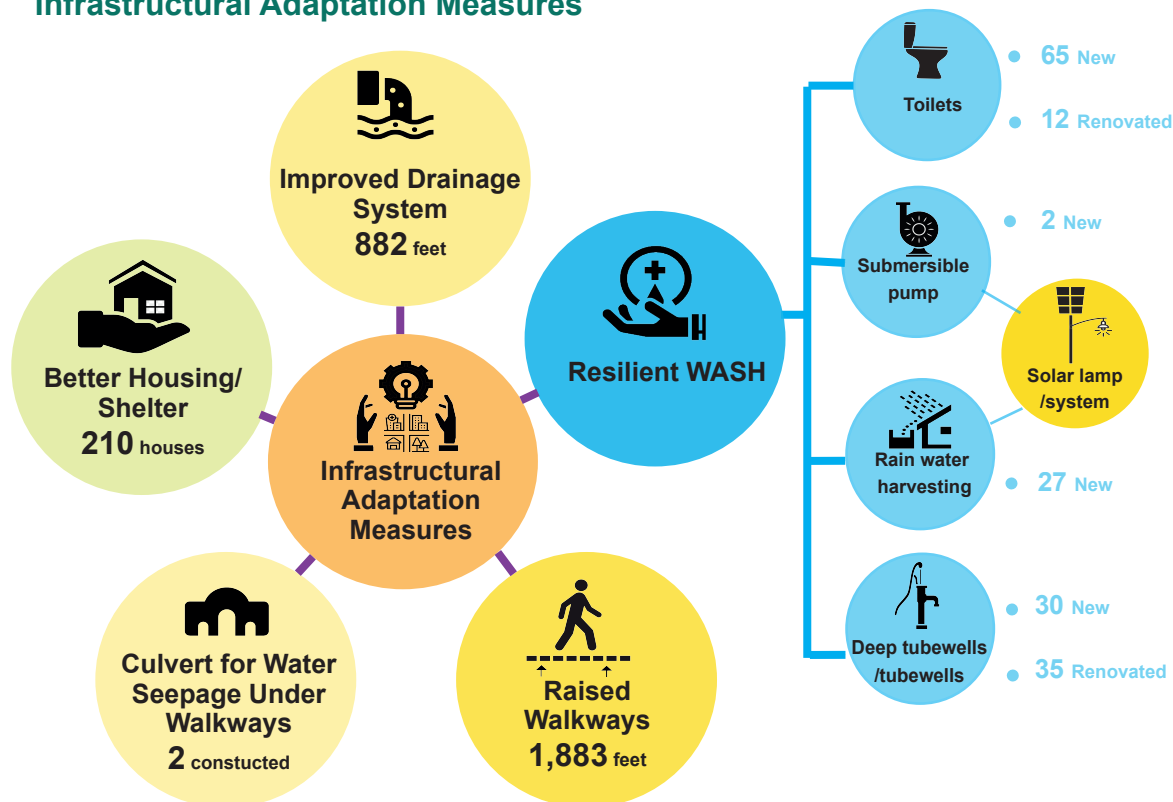
Improved drainage system
Drains are renovated or newly constructed to reduce water logging/ inundation in urban slum.

Resilient WASH
Water points and toilets are renovated/ installed/ constructed for better service in adverse climatic situations considering the past experience and future projections.

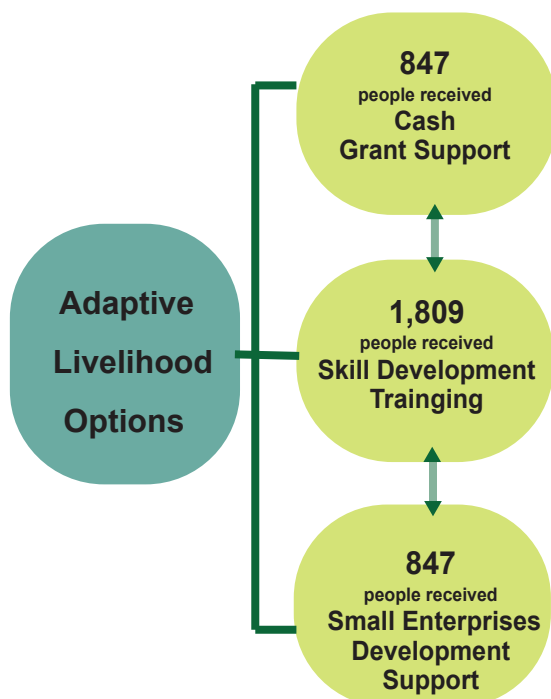
Raised walkways
Walkways are raised for better communications of residents to avoid water logging caused by heavy rainfall, Storm surge.

Better housing/ shelter
Use of transparent sheets to allow sunlight pass through & cement sheets for heat protection at roof-top, plinth raising, cement pillar for strengthening the house structure, eco-friendly cooking-stoves etc.

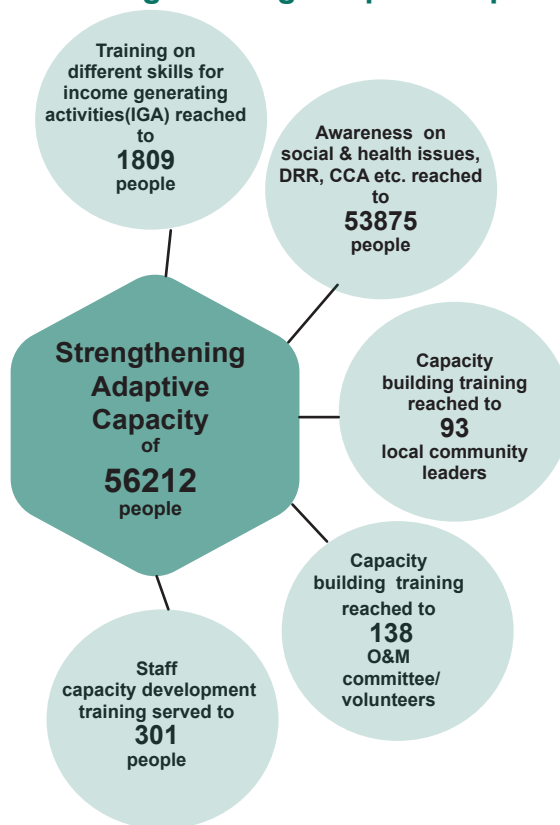
Culvert for water passage
Culvert construction to provide cross drainage to avoid water logging & help water to flow unobstructed under walkways.



Adaptive livelihood options



Strengthening Adaptive Capacity



Key Observations/ Learnings

Emphasis on gender & disability inclusion for increasing social resilience

Promoting females as focal for O&M of infrastructure provided, for quality assurance

Services provided requires constant follow up to strengthen social, economic and environmental resilience

Design & Content
CBF Secretariat

Editor
Nirendra Nath Sarkar,
Khandker Tarin Tahsin & Md. Jamil Akther

Advisor
Dr Md Golam Rabbani

Contributor
Adiba Ahamed & Pujarini Roy

To learn more, please contact-
Dr Md Golam Rabbani
Head, Climate Bridge Fund Secretariat
Telephone: +88 02 2222 81265 Ext- 3642
Email: rabbani.golam@brac.net