



## Integrated Development Programme: Eliminating poverty in Bangladesh's hard-to-reach areas through holistic interventions

Three in every 10 people live in poverty in Bangladesh's hard-to-reach areas - haor (wetlands) and char (riverine islands) regions. Meanwhile, eight out of 10 of the plain land indigenous communities of northern Bangladesh live in extreme poverty. Distance, language barriers and lack of adequate infrastructure hinder access to mainstream services for these communities.

BRAC Integrated Development Programme works with 1.7 million people across these areas, creating diverse livelihood opportunities and bringing basic services to their doorsteps.

### What we do

BRAC Integrated Development Programme focuses on addressing inequalities and ensuring access to basic services for people living in Bangladesh's hard-to-

reach areas through needs-based, holistic interventions.

We support communities to form village development organisations, which

act as one-stop service delivery centres. These platforms support people to access basic services and exercise their rights, in line with the Sustainable

Development Goal 1 - inclusive growth, and BRAC's strategic priority of addressing inequality and leaving no one behind.

### Why it works



#### Creating livelihood opportunities:

Equipping people with income-generating assets and skills, and ensuring access to financial services



#### Partnerships:

Supporting communities to link with local governments for social safety net services and infrastructure development



#### Increasing access to basic services:

Improving access to basic services, including education, healthcare, legal aid and water, sanitation and hygiene



#### Knowledge management:

Generating evidence from best practices and failure and capturing learning



#### Promoting gender equality:

Working with communities to increase the participation of women in decision making, exercising rights, accessing services and preventing domestic violence



#### Strengthening community resilience after COVID-19:

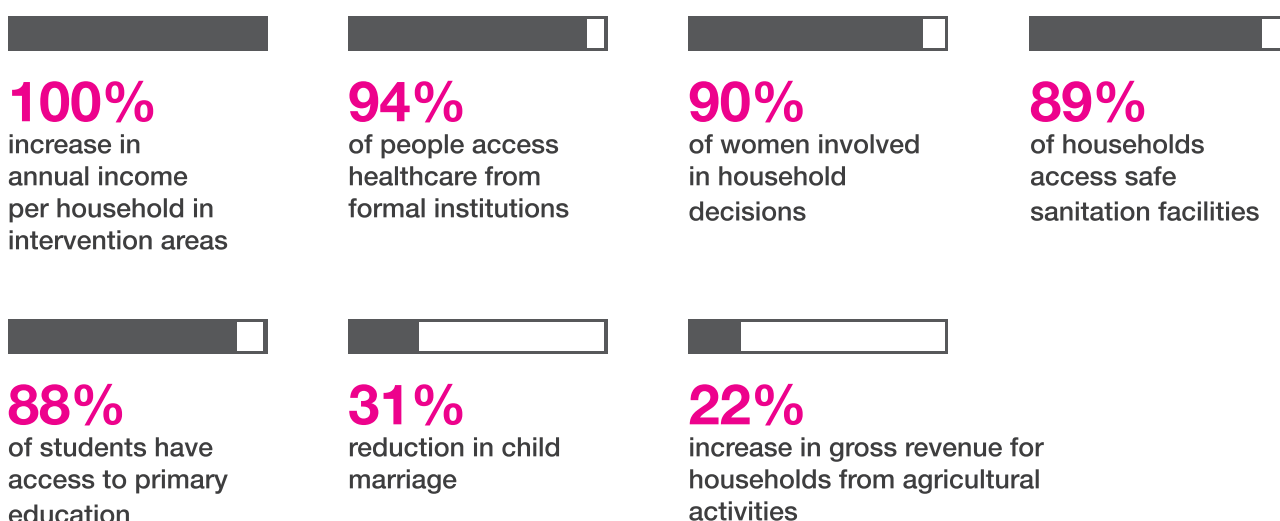
Specific support for communities to recover after the pandemic





## In numbers

Interventions in wetland regions have resulted in:



Interventions in regions with indigenous communities have resulted in:

