



Integrated Climate Change Programme

Newsletter | Q1 2026

Introduction

Climate change is disproportionately affecting the most vulnerable communities in Bangladesh, particularly those dependent on climate-sensitive livelihoods such as agriculture (crop, aquaculture, poultry, and livestock). Recurrent droughts, salinity intrusion, cyclones, erratic rainfall, cold wave, unseasonal fog and water scarcity are deepening poverty, food insecurity, and health risks in climate-vulnerable regions. Experiences from across BRAC programmes have shown that standalone interventions are often insufficient to address these interconnected challenges. Recognising the need for a more holistic response, BRAC launched the Integrated Climate Change Programme (ICCP) to build climate resilience through an integrated approach, across agriculture, livelihoods, health, and WASH. ICCP also aims to utilise advancements in climate data and information to support climate-adaptive decision-making at the community level. Building on the existing structure of the Integrated Development Programme (IDP) in active collaboration with CCP, BHP, MF, and WASH; ICCP initially focuses on two major climate hotspots, Barind and Coastal regions, as identified in the Bangladesh Delta Plan (BDP) 2100 and by various stakeholders. The programme aims to protect human development gains and strengthen resilience among the most climate-vulnerable households in Bangladesh through its three operational pillars of survive, grow and sustain.

What We Do



Organise

Mobilise vulnerable communities through Village Development Organisations (VDOs) and form sector groups by selecting appropriate members of the VDO (IDP) and VO (MF)

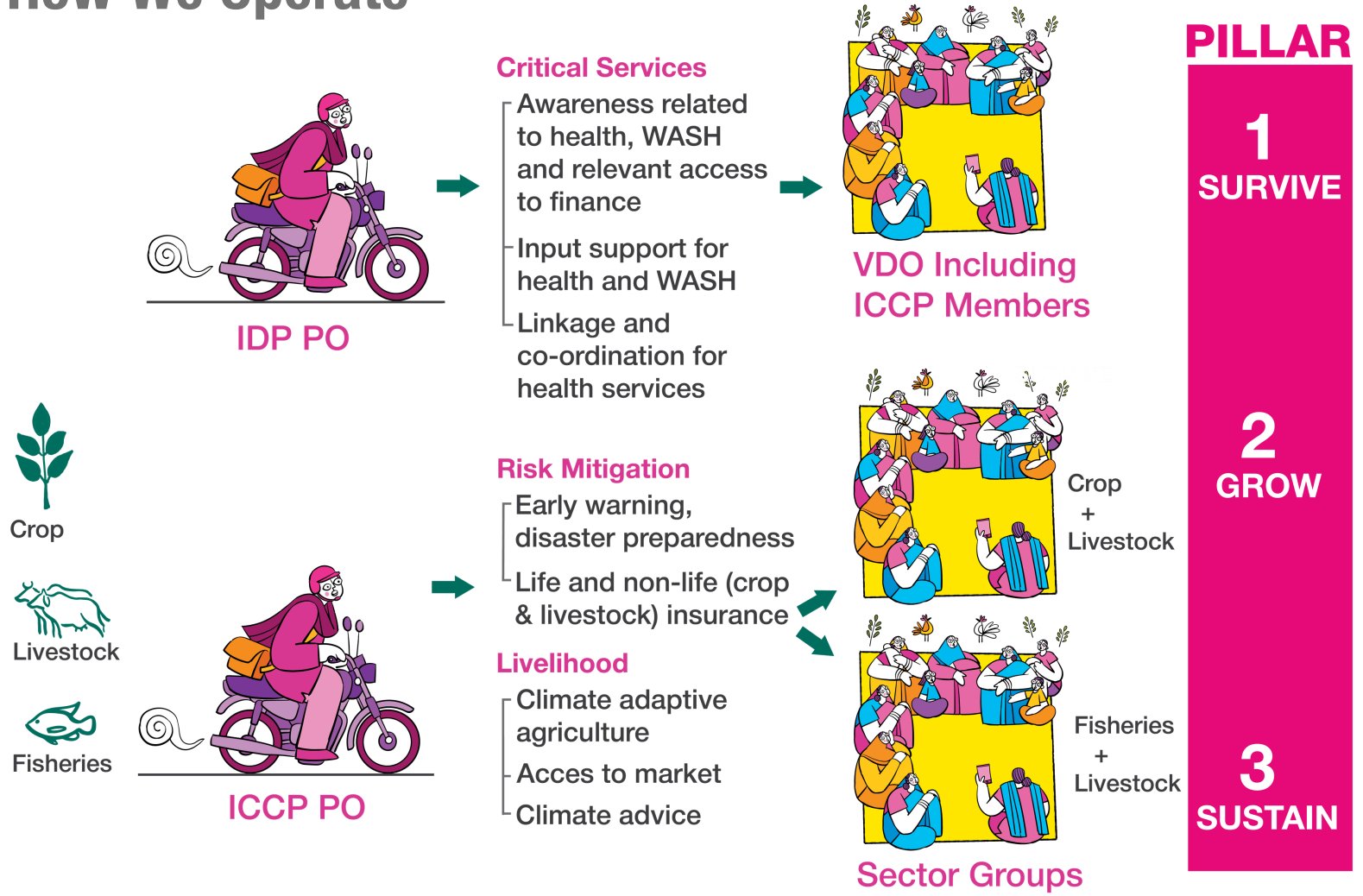
Capacitate

Build knowledge, skills and climate resilience through training, advisory support, health awareness and timely climate information

Connect

Link participants to markets, essential services and institutions to ensure access, fair pricing and sustained climate adaptation support for vulnerable farmers through adaptation clinics

How We Operate

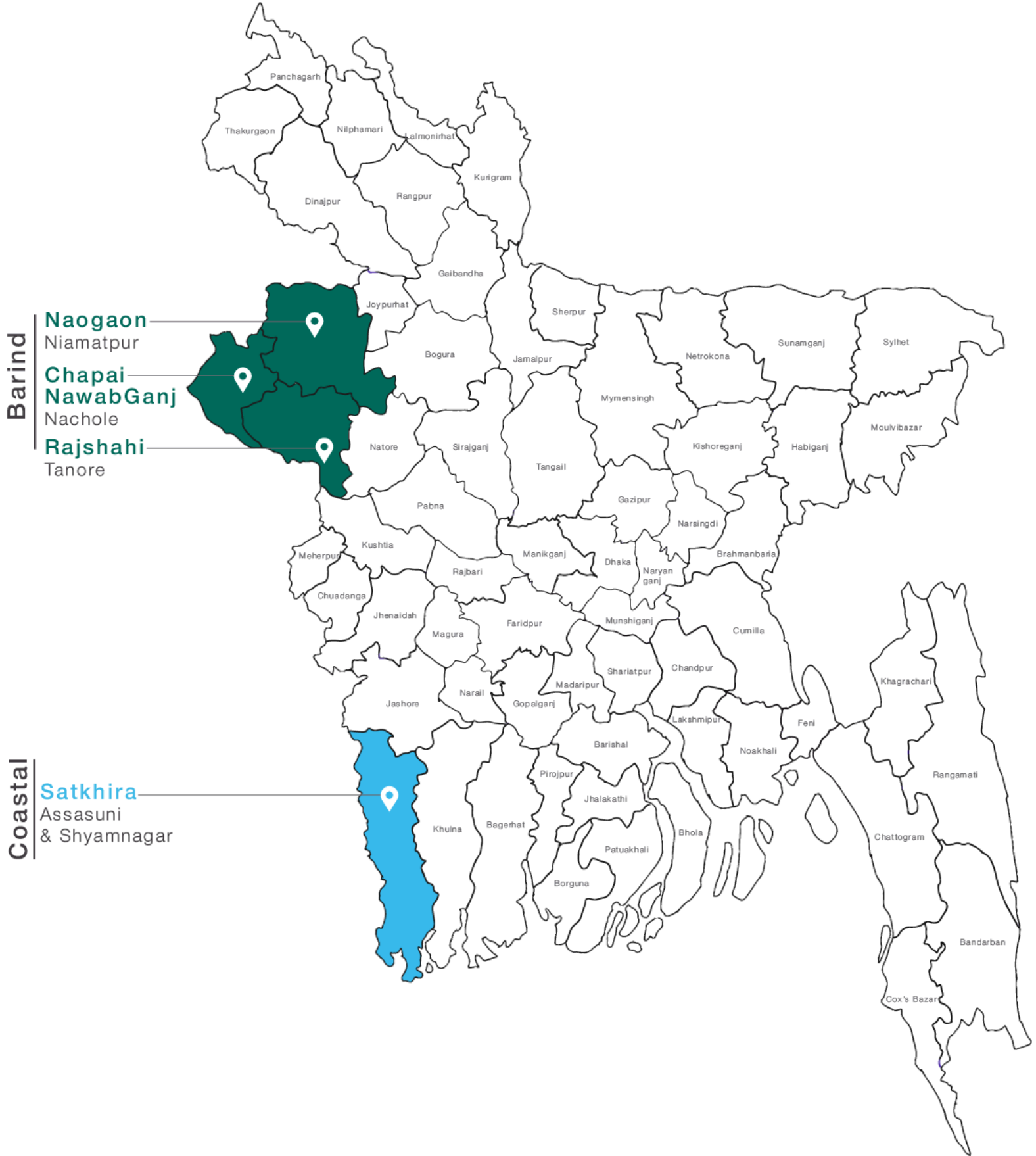


Operational Structure of ICCP

ICCP started by forming Sector Groups (SGs) from women smallholder farmers involved in agriculture, fisheries, and livestock, established 62 focused SGs across Barind and Coastal regions. ICCP’s frontline staff, the Programme Organisers (POs), are trained extensively on contextualising technical guidelines, facilitating FGDs, understanding crop and season-specific needs, and preparing data-informed training sessions. Capacity development follows a seasonal calendar, ensuring all learning is timely and relevant, supported by varietal demonstrations and adaptation practice plots.

ICCP is aligned with national priorities, following the programmatic and inclusive approach outlined in the National Adaptation Plan (NAP) to move beyond fragmented projects toward systemic, multi-sectoral resilience. It advances NAP Goal 2 by promoting climate-resilient agriculture through stress-tolerant crops, improved post-harvest practices, and strengthened livelihood security. ICCP also operationalises the Climate Change and Gender Action Plan (CCGAP) by empowering women, building their technical capacities, and supporting climate-resilient entrepreneurship.

Where We Are



Highlights from Field

Building Climate Resilience from the Ground Up: Sector Groups Take Shape

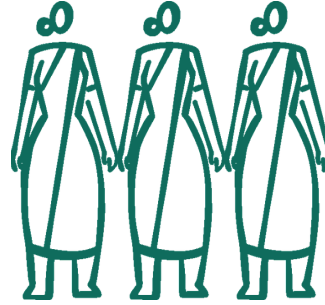
The field rollout of the Integrated Climate Change Programme (ICCP) has accelerated following surveys conducted across selected upazilas in the Coastal and Barind regions to identify potential members for Sector Groups. 62 sector groups (SG) focused on crops and fisheries had been formed. Each group was carefully profiled to understand members' existing farming practices and challenges. This process allows the programme to provide tailored information and knowledge support, helping farmers transition toward high-yield, climate-adaptive agricultural practices to reduce income loss. Additionally, 981 participants were linked with BRAC Microfinance services as Village Organisation (VO) members, enabling access to savings and loan facilities. With these foundations in place, the groups are beginning their journey toward climate-resilient agricultural livelihoods.



Sector Group Meeting



62 Sector Groups focused on crops and fisheries formed



981 participants were linked with BRAC Microfinance services as Village Organisation (VO) members

Bringing Advisory Services for Women Smallholder Farmers Closer: Agri-Support and Service Centre (ASSC) Launched in Niamatpur

In February 2026, the Integrated Climate Change Programme (ICCP) launched its first Agri-Support and Service Centre (ASSC) in Niamatpur. The ASSC is uniquely located within a BRAC Microfinance branch, making it easily accessible to community members, those who are involved with agriculture. As Village Organisation (VO) members regularly visit the branch, the centre provides an opportunity to reach a wider community with climate-related advisory services. The Agri-Support and Service Centre offers practical guidance and information to support climate-adaptive agriculture and livelihood practices. By integrating services within existing branch infrastructure, the initiative follows a cost-effective approach while ensuring that farmers and community members can access climate information and technical advisory support when they need it.



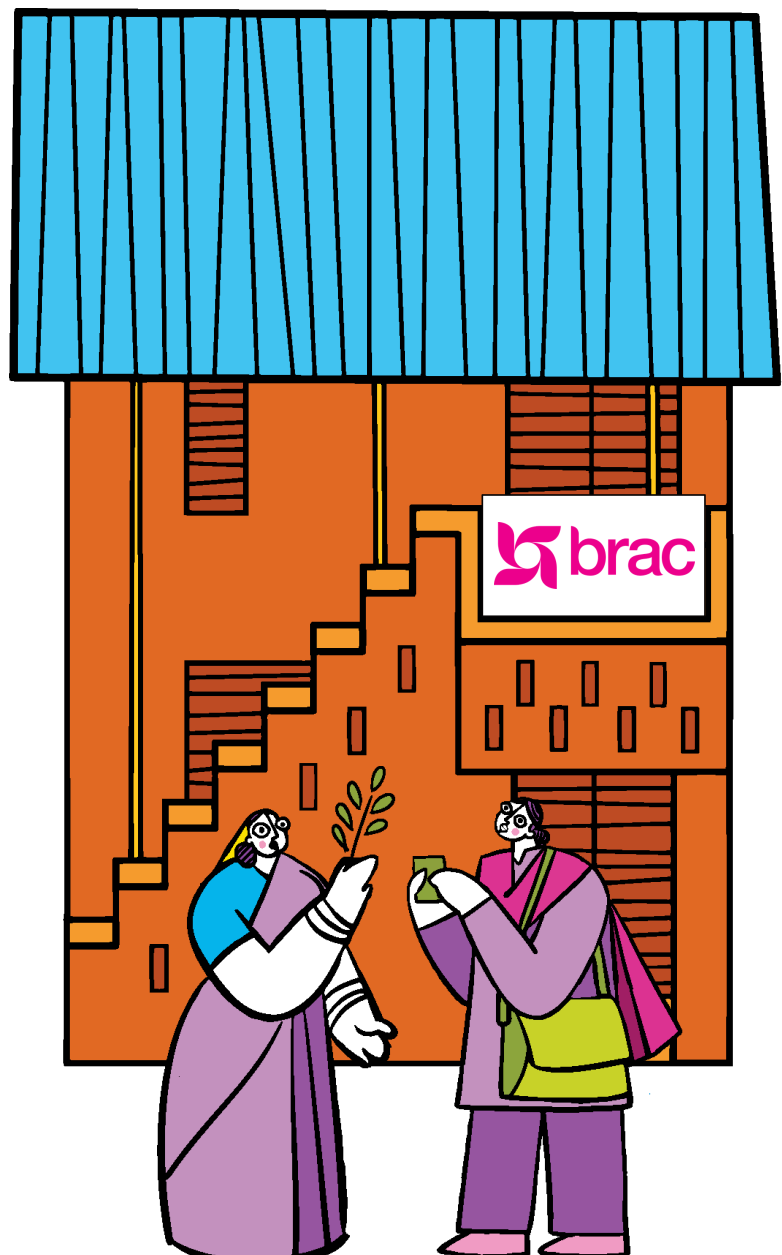
Farming Advice



Climate Information



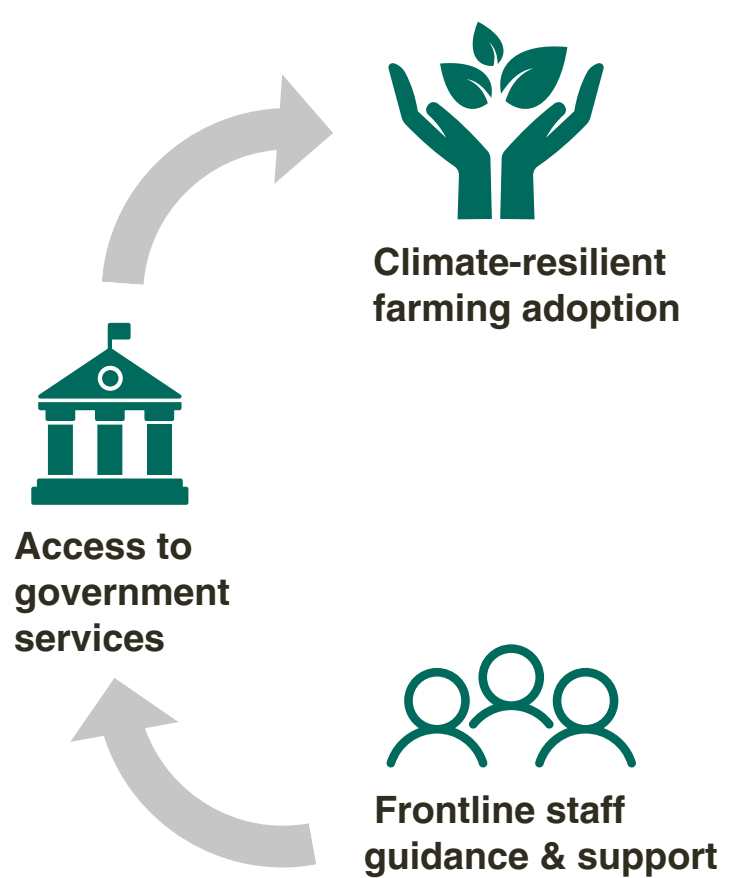
Livelihood Tips



Agri-Support and Service Center

Connecting Farmers to Opportunities: Strengthening Government Service Linkages services

Sector Group members are also benefiting from stronger linkages with government agricultural services. With support from ICCP frontline staff, farmers have accessed few services through government programmes. Frontline staff have played an important role in guiding farmers through the process, sharing information, facilitating communication with local service providers, and supporting women farmers to translate knowledge into action. As a result, Sector Group members are gradually establishing stronger connections with public services that support climate-resilient farming practices.



Learning by Doing: Trial and Learning Plot for Climate-Adaptive Agriculture



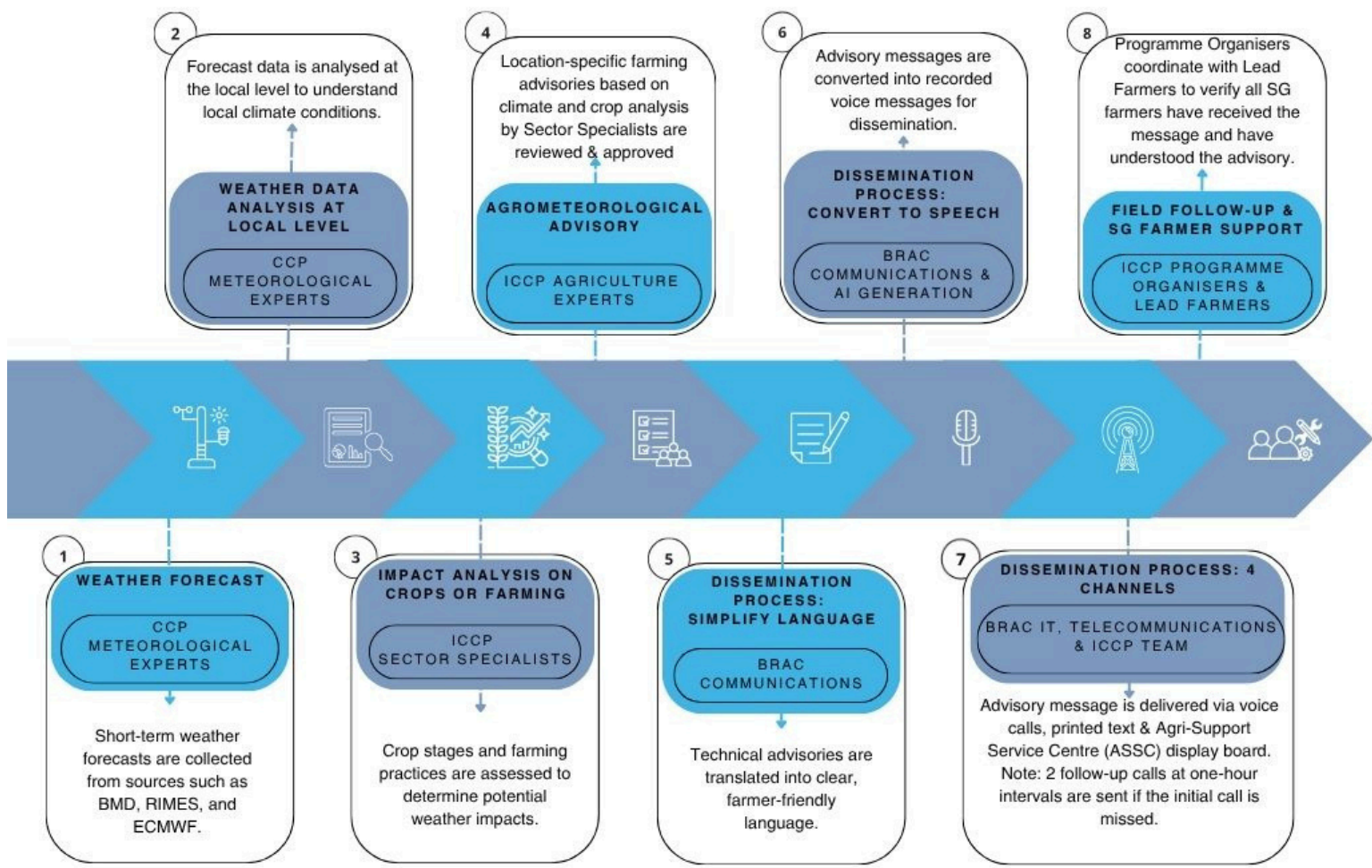
In February 2026, the Integrated Climate Change Programme (ICCP) piloted a trial and learning plot in Niamatpur, Naogaon. The plot is designed as a practical learning space for Programme Organisers (POs) and Agriculture Officers, where they can develop hands-on experience in climate-adaptive agriculture. The knowledge and skills gained from the plot are expected to be shared with sector group members, helping to expand the reach of climate-resilient agricultural practices at the community level. At present, a demonstration plot has been established featuring papaya cultivation, serving as a starting point for practical learning and future expansion of adaptive techniques.

Climate Information in Action: Advisory Services for Women Farmers (CIAS)

ICCP has started providing climate information and agrometeorological advisory services to participating farmers who are members of Sector Groups. This is a pilot initiative jointly developed by the Climate Change Programme (CCP) and ICCP. The trial will reach 981 women smallholder farmers across five upazilas in the Coastal and Barind regions through voice messages as phone calls. The pilot aims to observe how farmers receive, understand, and use the climate information in their farming decisions. The learning from this trial will help refine and strengthen climate advisory services for farmers in climate-vulnerable areas.



CIAS 2026-1



Content by
IDP
Communication

Design by
IDP
Communication

Feedback and Contacts
idp.communication@brac.net
nusrat.jah@brac.net
ilma.adrita@brac.net

For Regular Updates
<https://www.brac.net/pr ogram/integrated development/>

